



NEWS

ISSUE 29 | 17 JUNE 2011

Farewell to Jenny Graves



Professor Jenny Graves has retired from the School, after more than ten years here. In the course of her very distinguished career, Jenny has published some 400 research papers and won numerous awards and honours, including, last year, an Order of Australia for "service to scientific research in the field of genetics, particularly of Australian marsupials and monotremes and their relevance to international understanding of human evolution". For the last five years, Jenny has served as the Australian Academy of Science's Foreign Secretary.

The occasion of Jenny's retirement was marked by a wonderful seminar from Jenny - "Weird Animal Genomics and Sex: How my honours project became my life's work" - followed by a reception in the Robertson Building foyer. Although nominally retired, and now an ANU Emeritus Professor, Jenny is as busy as ever, retaining active collaborations with colleagues in the School as well with colleagues at the University of Canberra, the University of Melbourne, and La Trobe.

Greenhouse demolition

The greenhouses in the back compound of the Robertson building have been removed.



My fair queen

The journal *Cell* has expanded its *Leading Edge* section by introducing a new format called *Cell Culture* in which the editors write about "interesting biology processes that are loosely connected to life outside the lab". In the first edition of this experiment they highlighted a few popular stories including two articles from Ryszard Maleszka's lab in the context of the royal wedding. The connection between honey bee epigenetics and the royal wedding is indeed very loose, but the savour of "royalty" in the honey bee society is clearly too strong to resist, even for science writers operating outside the usual realm of daily newspapers and popular magazines. "My fair larvae", April 15.



WELCOME, FAREWELL & NEW APPOINTMENTS

Susan Howitt has been appointed as a second Deputy Head of the Biology Teaching and Learning Centre. In this capacity she will have responsibility for

the mentoring of teaching-focused academics in RSB and supporting educational research projects. Susan will also supervise the ANU Hubs and Spokes (in Medical Sciences) appointee, liaising with the University of South Australia in relation to the joint Bachelor of Medical Science.

Liang Li has joined Roddy Dewar, PS, as a PhD student. Liang completed his Hons at ANU in 2008. His PhD will focus on novel applications of entropy-based principles to biology.

Kim Holburn has joined the IT Infrastructure team. **Ben Bi, Hao Lin Jiang, Gwilym Lucas and Naveen Venugopal** have joined IT temporarily, to assist with the transition of network services to the new building.

Kelly Debono has left her role as Team Leader for Animal Services on 2 May, and has taken up a position with the Research Office as the Animal Ethics Manager. During her time in the School Kelly was awarded a Vice-Chancellor's Award for Innovation & Excellence in Service Quality, and a Barney John Award for services to RSBS.

Lee Phillips, also from Animal Services, left on 9 June.

Mark Snowball has left after over 20 years of service to RSBS/RSB, to a position teaching Electronics at CIT.

...continued overleaf

CONGRATULATIONS

Ashley Jones, who recently commenced as a PhD student in the Searle lab, PS, has been awarded a University Medal, and the Barry Boettcher prize for his outstanding undergraduate and honours academic achievements at The University of Newcastle. Ashley has also been awarded a John Stocker top-up scholarships to undertake his PhD on long-non coding RNAs.

Guowen (Tony) Duan, Behm lab, BSB, and the labs of Karl Gordon and Chris Helliwell at CSIRO, has submitted his PhD thesis on 'Ectopic expression of RNA-dependent RNA polymerase in *Drosophila melanogaster* and miRNA identification in *Helicoverpa armigera*'. Tony has accepted a postdoctoral position in the lab of Carola Vinuesa, JCSMR.

Matt Rutar, Provis lab, BSB, submitted his PhD thesis on April 27th, 'Characterisation of the neuroinflammatory response in a rat model of atrophic AMD'.

Sophia Callander, PhD student, Backwell and Jennions Labs, EEG, received two small research grants for a proposed PhD project to investigate whether larger male fiddler crabs help to protect their smaller neighbours to increase their attractiveness during mate choice. The grants are from Sigma Xi (Grants-in-Aid of Research) and The Linnaean Society of NSW (the Joyce Vickery Scientific Research Fund). **Isobel Booksmythe**, in the same group, has been awarded a student research grant by the Animal Behavior Society (USA).

...continued from page 1

Brendan Choat, M. Ball lab, PS, has taken up an academic position in the new Hawksbury Institute of the Environment at the University of Western Sydney.

Visiting Scholar, **Sebastia Matorell** will return to his PhD studies in Spain after researching hydraulic properties of snow gum in relation to drought tolerance with Brendan Choat, and freezing tolerance with Marilyn Ball.

RSB RISES AGAIN IN THE PURPLE SHIN!

The RSB soccer team (previously RSBS) had a mixed start in the annual ANU social soccer league the purple shin, with some spectacular wins and dismal losses! Captain Riccardo Natoli has again led from the front this season with a hat trick against the Comp Sci Chumps but has been eclipsed for the moment of the season so far by a spectacular air goal from star forward Benjamin Rae. RSB now sit in the bottom half of the table in a very tight season, but remains optimistic.



PAPERS ACCEPTED

Allewa, L.M., Gualano, R.C. and Clark, I.A. Current work and future possibilities for the management of severe influenza: using immunomodulatory agents that target the host response. *Future Virology*

Ball, M.C., Harris-Pascal, D., Egerton, J.J.G. and Lenné, T. The paradoxical increase in freezing injury in a warming climate: frost as a driver of change in cold climate vegetation. In: K.K. Tanino and K. Storey (eds) *Nature at risk: temperature adaptation in a changing climate*. CABI Press, Wallingford, UK

Burgess, A. and Searle, I. The clock primes defence at dawn. *Immunology and Cell Biology*

Choat, B., Medek, D.E. Stuart, S.A. Pasquet-Kok, J., Egerton, J.J.G. Salari, H., Sack L., and Ball, M.C. Xylem traits mediate a trade-off between resistance to freeze/thaw-induced embolism and photosynthetic capacity in over-wintering evergreens. *New Phytologist*

Dewar R.C., Sherwin W.B., Thomas E., Holleley C.E. and Nichols R.A. Predictions of single-nucleotide polymorphism differentiation between two populations in terms of mutual information. *Molecular Ecology*

Dingemanse, N., Bouwman, K., van de Pol, M., van Overveld, T., Patrick, S., Matthysen, E. and Quinn, J. Variation in personality and behavioural plasticity across four populations of great tit *Parus major*. *Journal of Animal Ecology*

Edmunds, R.C., Smith-Keune, C., van Herwerden, L., Fulton, C.J., Jerry, D.R. Exposing local adaptation: synergistic stressors elicit population-specific lactate dehydrogenase-B (ldh-b) expression profiles in Australian barramundi, *Lates calcarifer*. *Aquatic Sciences*.

James, A.C., Kolic, K., Bedford, S.M., and Maddess, T. Stimulus parameters for multifocal pupillographic objective perimetry. *Journal of Glaucoma*

Lovelock, C.E., Feller, I.C., Adame, M.F., Reef, R., Penrose, H.M., Wei, L., and Ball, M.C. Intense storms and the delivery of materials that relieve nutrient limitations in mangroves of an arid zone estuary. *Functional Plant Biology*

Maddess, T. FDT and parasol cells. *Investigative Ophthalmology and Vision Science*

McMurtrie R.E. and Dewar R.C. Leaf trait variation explained by the hypothesis that plants maximise their canopy carbon export over the lifespan of leaves. *Tree Physiology*

Milner, R.N.C., Jennions, M.D., Backwell, P.R.Y. Know thine enemy's neighbor: neighbor size affects floater's choice of whim to fight. *Behavioral Ecology*

Petvises, S., and O'Neill, H. Hematopoiesis leading to a diversity of antigen presenting cells. *Immunology and Cell Biology*

Robinson, A.L., Adams, D., Boss, P.K., Heymann, H., Solomon, P.S. and Trengove, R.D. The relationship between sensory attributes and wine composition for Australian Cabernet Sauvignon wines. *Australian Journal of Grape and Wine Research*

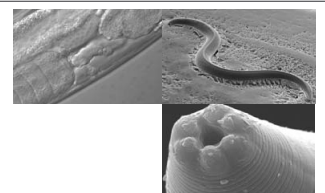
Rutar, M., Natoli, R., Kozulin, P., Valter, K., Gatenby, P., Provis, J.M. Analysis of complement expression in light-induced retinal degeneration: Synthesis and deposition of C3 by microglia/macrophages is associated with focal photoreceptor degeneration. *Invest Ophthalmol Vis Sci*

Starrs, D., Ebner, B.C., Lintermans, M., Fulton, C.J. Using sprint swimming performance to predict upstream passage of the endangered Macquarie perch in a highly regulated river. *Fisheries Management & Ecology*

Sun, F., M. L. Roderick, W. H. Lim, and Farquhar, G.D., Hydroclimatic projections for the Murray-Darling Basin based on an ensemble derived from Intergovernmental Panel on Climate Change AR4 climate models, *Water Resour. Res.*

van de Pol, M., Vindenes, Y., Sæther, B.E., Engen, S., Ens, B.J., Oosterbeek, K., Tinbergen, J.M. Poor environmental tracking can make extinction risk insensitive to the colour of environmental noise. *Proceedings of the Royal Society: Biological Sciences*.

Banner image: composite of three images from the Behm lab, BSB. (L-R) Light micrograph showing some of the internal structure (proximal reproductive system) of the nematode *Caenorhabditis elegans*; SEM of the whole animal; SEM of *C. elegans* mouth.



This newsletter is published monthly, and is archived at <http://biology.anu.edu.au/newsletter>. Please contact [Sharyn Wragg](#) to submit material for future issues, or to be added to our newsletter mailing list. Editing: Kieran Kirk and Sharyn Wragg. Design and layout: Sharyn Wragg.