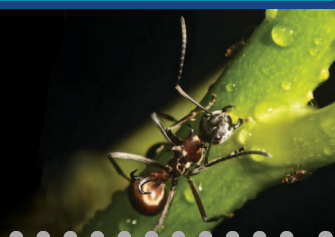


NEWSLETTER



NEWS

ROBERTSON LECTURER

John Evans has received one of the two awards made to senior researchers by the [Australian Society of Plant Scientists](#). The Robertson lecture is delivered to the annual conference and recognises Sir Rutherford N (Bob) Robertson who was, in 1958, the second President of the Society. Bob, the second director of RSBS, had a formative influence on plant science in Australia and the Society began the biennial 'Robertson Lectures' in 1994 when Bob turned 81. Past Robertson lecturers who are members of RSB include Barry Osmond (1994) and Jan Anderson (1996).



TALL POPPY AWARD
Rowena Martin (BSB) has won an ACT 'Young Tall Poppy' Science Award for her work on anti-malarial drug resistance. The Young Tall Poppy

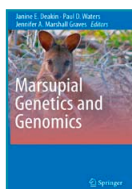


Science Awards are awarded by the Australian Institute of Policy and Science and form part of the Tall Poppy Campaign – which promotes public awareness of Australia's intellectual achievements. [\[ANU Media Release\]](#)

BOOK LAUNCH

Janine Deakin, Paul Waters and Jenny Graves (EEG) are editors of a new book, "Marsupial Genetics and Genomics." Eleven past or present members of RSB

contributed to the book, which will be launched at the ANU Co-op bookshop on 27th October, 5.00pm.



SHORT STORY PRIZE

Tonya Haff, PhD student (EEG) was a joint winner in the ANU Short Story competition. [\[ANU Media Release\]](#)

SCHOLARSHIPS

Franziska Gruhl, a Master's student from the University of Heidelberg, has been awarded a DAAD scholarship to undertake a three month research project in Iain Searle's lab (PS). Franziska plans to return next year to undertake additional experiments before publishing her intriguing endoploidy data.

Kelly Debono and Megan van der Velde (Animal Services) received Training and Development scholarships for their papers on animal care, published in the newsletter of the Australian New Zealand Laboratory Animal Association.

BIOLOGY BALL

The inaugural student-run ANU Biology Society Ball, held on September 11th at the Ainslie Football Club, was a great success. Biology students and friends were dressed to impress as they enjoyed a three-course meal, tore up the dance floor to sweet beats provided by a Uni Vibes DJ, and met the new Biology Society mascot, Neville the



Naughty Nautilus. More information about the Biology Society can be found at the website is <http://biology.society.club.anu.edu.au/> or through emailing biology.society.anu@gmail.com.

WELCOME

Shuang Xiang (Assistant Professor, Chengdu Institute of Biology, China) is a Visiting Fellow in Plant Sciences, Robertson Building. Dr Xiang's stay is funded by a one-year Scholarship from the Chinese Academy of Science. Dr Xiang will collaborate with Owen Atkin (PS) on a project assessing patterns of thermal acclimation in contrasting plant functional groups.

Hua Deng, a PhD student from the School of Life Science at Xiamen University, China, joins Iain Searle's lab (PS) as a Joint Graduate Student for 18 months, having been awarded a scholarship from the China Scholarship Council. Hua Deng will undertake an epigenetics research project using the model plant *Arabidopsis*.

Andy Chervenak is a graduate student at the University of Michigan, USA and is visiting Ruth Arkell's lab (BSB) until the end of 2010. Andy was awarded a Travelling Fellowship from the Company of Biologists and will study the role of Zic2 in the development of the inner ear.

Olivia Wyss joins RSB to work on the Health Hubs and Spokes Project to develop and implement a shared Bachelor of Medical Science between ANU and UniSA.

JiaHui Du has just started a PhD with Dean Price and Susan Howitt, BSB, and will be working on bicarbonate transporters.

BSB: **Lavanya Kumarappan**, Research Assistant, and **Peter Papathanasiou**, Research Fellow, both in the O'Neill Lab, BSB.

EEG: **Jessie Au**, Casual with Bill Foley until October. **Chong Ben Ong**, Casual with Adrienne Nicotra until December. **Stuart Rae**, Visiting Fellow with Rob Magrath until August 2012. **William Feeney**, Casual with Naomi Langmore until December. **Violeta Simon Porcar** and **Vasiliki Falara**, Visiting Fellows with Rod Peakall until October. **Eva Gracia Martinez**, Visiting Scholar with Scott Keogh until November.

FAREWELL

Farewell to **Neil Horner** who has worked as a postdoctoral fellow in the Jones Lab (PS) for the last two years. Neil is returning to the UK to undertake an MSc in Applied Bioinformatics at Cranfield University.

NOTICES

EEG SEMINARS

Thursday, 7 October: "Colour and polarisation channels for communication and camouflage in the marine environment" Justin Marshall, Queensland Brain Institute

Tuesday 26 October:

"Sex, symbiosis and 'she-males': Interactions between butterflies and their bacterial endosymbionts" Darrell Kemp, Macquarie University.

This newsletter is distributed fortnightly by email and hard-copy, and is archived at <http://biology.anu.edu.au/Newsletter>. Please contact [Sharyn Wragg](mailto:Sharyn.Wragg@anu.edu.au) to submit material for future issues.

PURPLE SHIN VICTORY

RSB Soccer (ex-RSBS) have won the Purple Shin intramural soccer competition which has been held annually since 1970. With five minutes to go and the match hanging in the balance, the 0-0 deadlock was broken in dramatic fashion when Benjamin Rae connected with a Riccardo Natoli corner kick to send RSBS ahead. Wild celebrations were heard across campus, no more so than on the pitch itself where successive waves of pitch invaders attempted to lift the team onto their shoulders and carry them on a victory march to the Robertson building.



A second goal was scored by the winning captain Natoli who thanked the sideline supporters post-match, saying: "Until Christmas, happy hour is on me!" There were outstanding performances from

players across the park, especially the defensive line which stood like a stone wall in front of goal. The team greatly appreciates the support of RSB members who braved the clear blue skies to watch the game. RSB soccer will be looking for new players next season who are willing to risk it all in pursuit of footballing excellence.



PAPERS ACCEPTED

Albrecht, V., Estavillo, G.M., Cuttriss, A.J., and Pogson, B.J. Identifying chloroplast biogenesis and signalling mutants in *Arabidopsis thaliana*. *Photosyn. Research Protocols*

Albrecht, V., Šimková, K., Carrie, C., Delannoy, E., Giraud, E., Whelan, J., Small, I., Apel, K., Badger, M and Pogson, B.J. The cytoskeleton and the peroxisomal-targeted SNOWY COTYLEDON 3 protein are required for chloroplast development in *Arabidopsis*. *Plant Cell*

Balkrishna, S., Bröer, A., Kingsland, A. and Bröer, S. Rapid down-regulation of the rat glutamine transporter SNAT3 by a caveolin-dependent trafficking mechanism in *Xenopus laevis* oocytes. *Am J Physiol Cell Physiol*.

Brodersen, C.R., McElrone, A.J., Choat, B., Matthews, M.A. and Shackel, K.A. The dynamics of embolism repair in xylem: in vivo visualizations using High Resolution Computed Tomography. *Plant Physiology*

Carle, C.F., James, A.C., Kolic, M., Loh, Y. and Maddess, T. High resolution multifocal pupillographic objective perimetry in glaucoma. *Investigative Ophthalmology & Vision Science*

Chan, K.X., Crisp, P.A., Estavillo, G.M. and Pogson, B.J. Chloroplast-to-nucleus communication: current knowledge, experimental strategies and relationship to drought stress signaling. *Plant Signaling and Behavior*

Che, P., Bussell, J.D. Zhou, W., Estavillo, G., Pogson, B.J. and Smith S.M. Signaling from the Endoplasmic Reticulum Activates Brassinosteroid Signaling and Promotes Acclimation to Stress in *Arabidopsis*. *Science Signaling*

Cobbold, S.A., Martin, R.E. and Kirk, K. Methionine transport in the malaria parasite, *Plasmodium falciparum*. *Int. J. Parasitol.*

Gowland, K. M., J. T. Wood, M. A. Clements, and A. B. Nicotra. in press. Significant phorophyte (substrate) bias is not explained by fitness benefits in three epiphytic orchid species. *American Journal of Botany*.

He, B., T. Oki, F. Sun, D. Komori, S. Kanae, H. Kim, and Yamazaki, D. Estimating monthly total nitrogen concentration in streams by using artificial neural network, *J. of Environmental Management*

Jaatinen, K., Lehtonen, J. and Kokko, H. Strategy selection under conspecific brood parasitism: an integrative modelling approach. *Behavioral Ecology*

Lehtonen, J. and Kokko, H. In press. Two roads to two sexes: unifying gamete competition and gamete limitation in a single model of anisogamy evolution. *Behavioral Ecology and Sociobiology*

Lens F., Sperry, J.S., Christman, M.A., Choat, B., Rabaey, D. and Jansen, S. Testing hypotheses that link wood anatomy to cavitation resistance and hydraulic conductivity in the genus *Acer*. *New Phytologist*

Narendra, A., Gibb, H. and Ali, T.M.M. Structure of ant assemblages in Western Ghats, India: role of habitat, disturbance and introduced species. *Insect Conservation and Diversity*.

Narendra, A., Reid, S.F., Greiner, B., Peters, R.A., Hemmi, J.M., Ribi, W.A. and Zeil, J. Caste-specific visual adaptations to distinct daily activity schedules in Australian *Myrmecia* ants. *Proceedings of the Royal Society B*

Nicotra, A. B., O. K. Atkin, S. P. Bonser, A. Davidson, E. J. Finnegan, U. Mathesius, P. Poot, M. D. Purugganan, C. L. Richards, F. Valladares, and M. Van kleunen. *Plant phenotypic plasticity in a changing climate Trends in Plant Science*.

O'Neill, H.C. and Tan, J.K.H. The spleen in hematopoiesis. *Transplantation*

Solomon, P. S. and Rathjen, J.P. Pathogen Effectors Shed Light on Plant Diseases. *Functional Plant Biology*

Stephenson, D.P., R.J. Moore and Allison, G.E. *Lactobacillus* strain ecology and persistence within broiler chickens fed different diets; identification of persistent strains. *Appl Environ Microbiol*.

Zeil, J. and Hemmi, J.M. Crabs and Their Visual World. In: Breed M.D. and Moore J., (eds.) *Encyclopedia of Animal Behavior*, volume 1, pp. 411-420 Oxford: Academic Press.