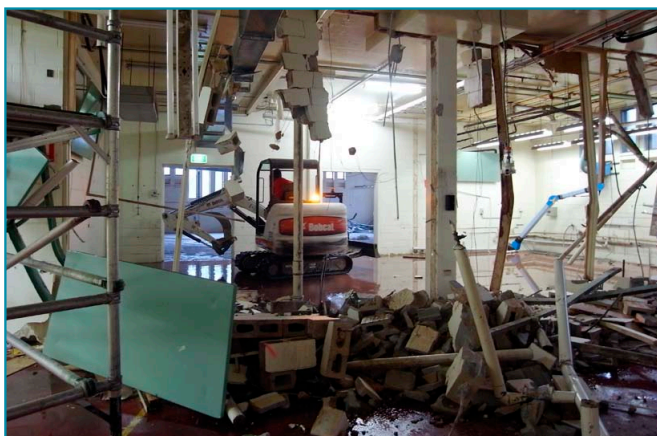


NEWSLETTER

NEWS

ISSUE 20 | 25 JUNE 2010

WORK BEGINS ON THE NEW RSB/RSC WORKSHOP



The much-anticipated workshop refurbishment in the Robertson Building has commenced, with demolition work beginning on June 15 and the main construction phase hopefully to begin on 28 June.

Stage 1 of the project will see a major transformation in the appearance, layout and functionality of the main workshop floor space. The new layout provides a more usable, and safer, work environment, maximises the available working space, provides enhanced circulation space for all users, and

ensures that the workshop meets current and future requirements.

The design has allowed for a much-needed expansion of the space allocated to the refrigeration/electrical and welding teams, with the inclusion of a new fume extraction system and piped gases, reducing the need for cylinder storage.

The purchase of a new combination Thicknesser/Joiner, together with the installation of a new work bench incorporating several pieces of machinery, will save considerable floor

space in the Joinery area. The aging dust extraction system will be upgraded and modified to accommodate the new floor layout.

The Mechanical Team will benefit from the introduction of a CNC Milling Centre, which will replace two of the extremely tired 30 year old manual Mills, as well as improving operator safety. While the CNC Milling centre has yet to be secured under the project, it is envisaged that, with strategic management on several other items by the project team and Hindmarsh, the Combined Workshop will be able to introduce the CNC in the very near future.

Designated corridor/storage areas will allow enhanced circulation space, providing further safety for our trade staff, whilst still allowing an open door policy to ALL members of RSB and RSC.

Other features of the workshop refurbishment include increased lighting, acoustic panelling, a new compressed air system, a new industrial benching and storage

Continued overleaf

CONGRATULATIONS

Ros Attenborough, an Honours student in the Ball-Hayward lab, EEG, and Helen Rickards, an Honours student in the Goodnow lab in JCSMR, won the Australian Society for Biochemistry and Molecular Biology Prize, awarded each year to the two top students in undergraduate Biochemistry and Molecular Biology.



Ros Attenborough



Rob Allen

Congratulations to Rob Allen, Millar lab, BSB, whose PhD thesis, 'Functional analysis of the *Arabidopsis* miR159 family', has been accepted. Rob has been awarded an ARC post-doctoral fellowship to continue his interests in gene silencing at the School of Molecular Biosciences, Sydney University, commencing 21 June.

NEW ROLE

Ginny Sargent has joined the Operations Team three days per week to take over part of Garry Mayo's role whilst he works upon obtaining AQIS and OGTR certifications for the new building.

This newsletter is distributed fortnightly by email and hard-copy, and is archived at <http://biology.anu.edu.au/Newsletter>.

Contact [Diane Whitehead](#) to be added to the mailing list, and to submit material for future issues.

NOTICES

PLANT BIOLOGY SEMINAR SERIES

29 June, 1pm
Plant Industry Lecture Theatre, CSIRO
Professor Bruno Cammue, Centre of Microbial and Plant Genetics, KU Leuven
'Plant defensins: role in defence and mode of antifungal action'.

EEG SEMINAR SERIES

29 June, 1pm
Evolution, Ecology & Genetics Seminar Rm (Gould Wing), Building 116, Daley Rd, ANU.
Lynn Huynh, Emory University
'The genetics of a chromosomal rearrangement in the white-throated sparrow that is linked to plumage and behavioral polymorphisms'.

These and other seminars can be found on the [RSB Events page](#).

RSB MORNING TEA

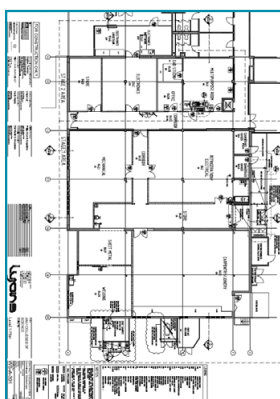
The Biomedical Sciences and Biochemistry Division will host a morning tea on Wednesday 30 June, 10.30am, Peter Baume Bldg 42A, Ground floor tea room. All Welcome.

Continued from page 1

units and new fresh air ventilation. The existing Robertson Building loading dock will also gain a new hoist lift and an extension to the dock landing, which will increase safety not only for workshop staff but for the wider RSB and ANU community.

The overall project is estimated to take four months.

[Stage one plan- click to view pdf.](#)



BIOLOGY TEACHING AND LEARNING

Barbara van Leeuwen

We have created a Wattle web site for all biology teaching staff. This will be the equivalent of an intranet site for Biology Teaching and Learning that contains teaching information not available for public viewing.

The site will contain teaching policy documents, student data we have been collecting as a part of our curriculum review, minutes of meetings relevant to teaching or links to the relevant web sites, and other documents relating to the Biology Curriculum Review.

We will use the 'News Forum' to email all teaching staff about events and important information and 'Upcoming Events' to create a calendar of events.

Staff teaching into biology courses in 2009 and all RSB Lab Leaders have been included as 'tutors'. For those not familiar with Wattle, to access the site go to the Wattle link on the top left of the ANU Staff web page (address <http://wattle.anu.edu.au/>) and type in your university ID and password. This will take you to a page called 'My Courses' and you can click on 'Biology Teaching and Learning'. If you know someone we have missed, please let Marie McNamara know. We hope to be able to include non-ANU teaching staff as guests on this web site.

We are currently uploading material to the site and expect to have most information available before the start of semester 2 (mid-July). We hope this will enhance communication about biology teaching. Any suggestions to improve communications and the quality of our teaching are most welcome.

DIRECTOR'S SERIES SEMINAR

The first seminar in the RSB Director's series was held on Thursday, June 24. Vanessa Hayes, soon to take up the Chair of Human Genomics at the J. Craig Venter Institute in San Diego delivered a fascinating lecture entitled 'Personalized Indigenous Genomes-Defining the Extent of Modern Human Diversity'.



Later in the afternoon Vanessa met with a group of research students and post-docs for an informal discussion about career-related issues. Both events were well attended.

NEWSLETTER TO BE ISSUED MONTHLY

The RSB Newsletter will, from now on, be issued on a monthly basis, with the next edition scheduled for mid-July.

PAPERS ACCEPTED

Abdus, F., Altin J. G. Ag-containing liposomes engrafted with flagellin-related peptides are effective vaccines that can induce potent anti-tumor immunity and immunotherapeutic effect. *Journal of Immunology*.

Fromhage, L., Kokko, H. Spatial seed and pollen games: dispersal, sex allocation, and the evolution of dioecy. *Journal of Evolutionary Biology*.

Laffont, C., Blanchet, S., Lapierre, C., Brocard, L., Ratet, P., Crespi, M., Mathesius, U., Frugier, F. The Compact Root Architecture 1 gene regulates lignification, flavonoid production and polar auxin transport in *Medicago truncatula*. *Plant Physiology*.

Lanfear, R., Welch, J.J., Bromham, L. Watching the Clock: Studying variation in rates of molecular evolution between species. *Trends in Ecology & Evolution*.

Lehane, A.M. and Kirk, K. Efflux of a range of antimalarial drugs and 'chloroquine resistance reversers' from the digestive vacuole in malaria parasites with mutant PfCRT. *Molec. Microbiol.*

Lockett, G. A., Helliwell, P., Maleszka, R. Involvement of DNA methylation in memory processing in the honey bee. *NeuroReport*.

Weaver, H.J., Hawdon, J.M., Hoberg, E.P. Soil transmitted helminthiasis: implications of climate change and human behaviour. *Trends in Parasitology*.

Yong, J.W.H., Letham, D.S., Wong, S.C., Farquhar, G.D. Effects of root restriction on growth and associated Cytokinin levels in cotton. *Functional Plant Biology*.