

PLANT BIOLOGY SEMINAR SERIES

INVITED SEMINAR: 7th October 2009



CSIRO



THE AUSTRALIAN NATIONAL UNIVERSITY

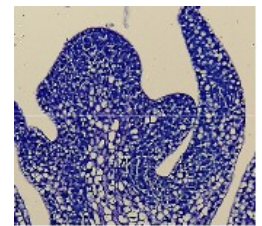
Sponsors: **RESEARCH SCHOOL OF BIOLOGY**
ARC CoE in PLANT ENERGY BIOLOGY



To Be or Not to Be Germ Cells

by

Prof. PREM BHALLA



School of Land and Environment
ARC CoE for Integrative Legume Research
University of Melbourne

<http://www.landfood.unimelb.edu.au/staff/bhalla.html>

<http://www.landfood.unimelb.edu.au/research/Biotech/index.html>

Plant reproduction is vital for species survival, and is also central to the production of food for human consumption. Seeds result from the successful fertilization of male and female gametes, but our understanding of the development, differentiation of gamete lineages and fertilization processes in higher plants is limited. Germ cells in animals diverge from somatic cells early in embryo development, whereas plants have distinct vegetative and reproductive phases in which gametes are formed from somatic cells after the plant has made the transition to flowering and the formation of the reproductive organs. Recently, novel insights into the molecular mechanisms underlying male germ-line initiation and male gamete development in plants have been obtained. In this seminar, Prem will discuss molecular events controlling male germ-line development especially, on the nature and regulation of gene expression programs operating in male gametes of flowering plants.

Seminar at 1pm
Robertson Lecture Theatre, RSBS, ANU
Light snacks/lunch to follow after the seminar in the RSBS Foyer

